

CARNAHAN · PROCTOR · CROSS, INC.

CONSULTING ENGINEERS · SURVEYORS · PLANNERS

6101 WEST ATLANTIC BOULEVARD, MARGATE, FLORIDA 33063  
PHONE: 954-972-3959 FAX: 954-972-4178

MAY 2002

990901B

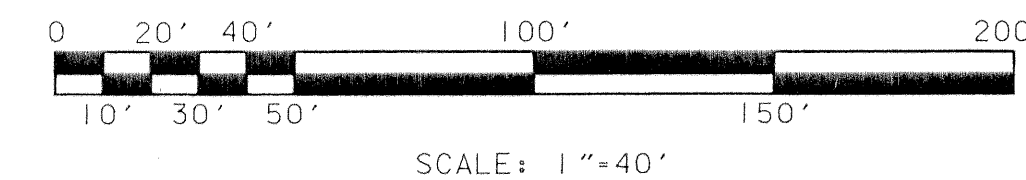
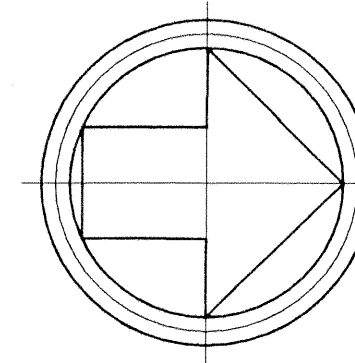
JSH

EVERGRENE P.C.D.

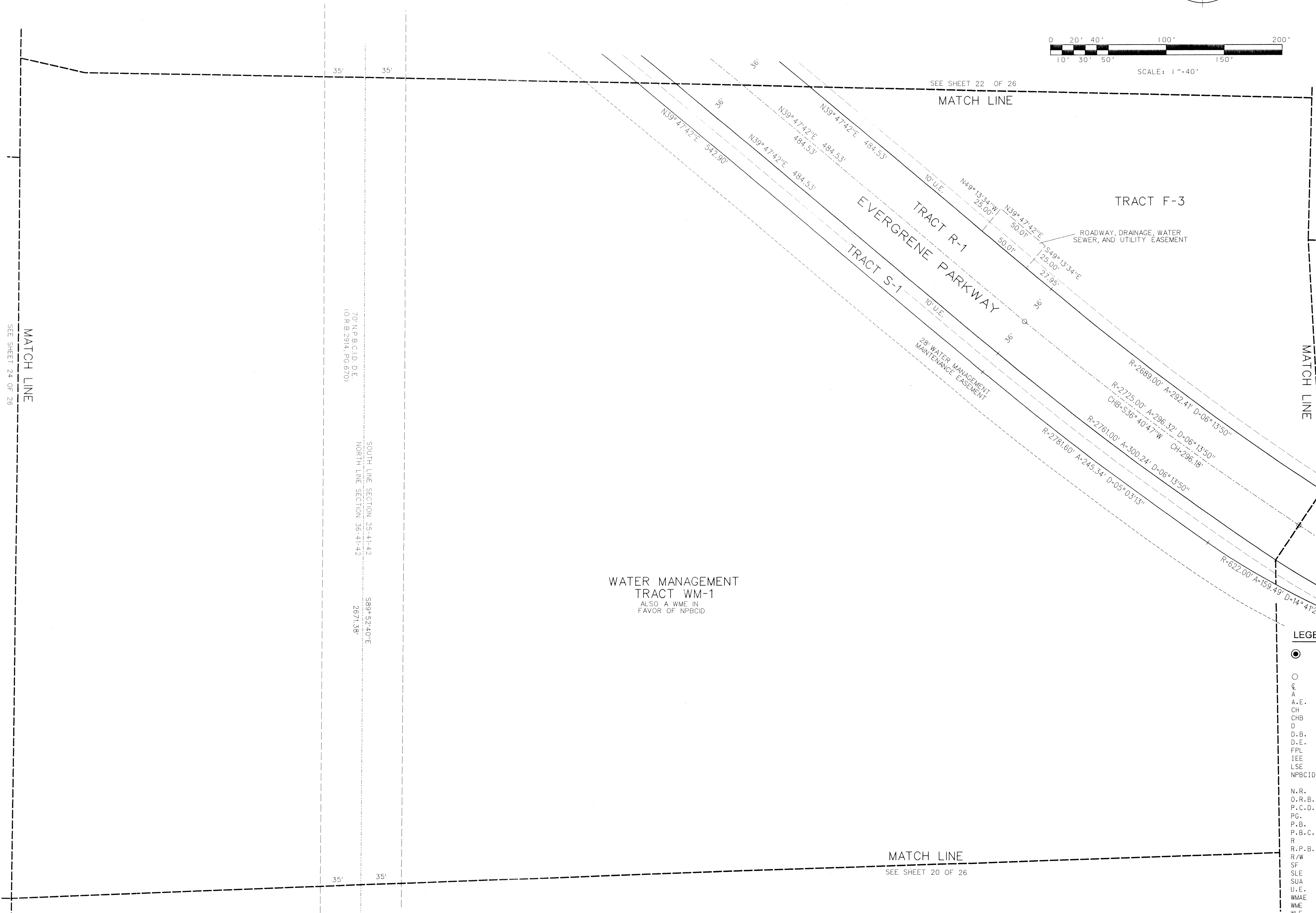
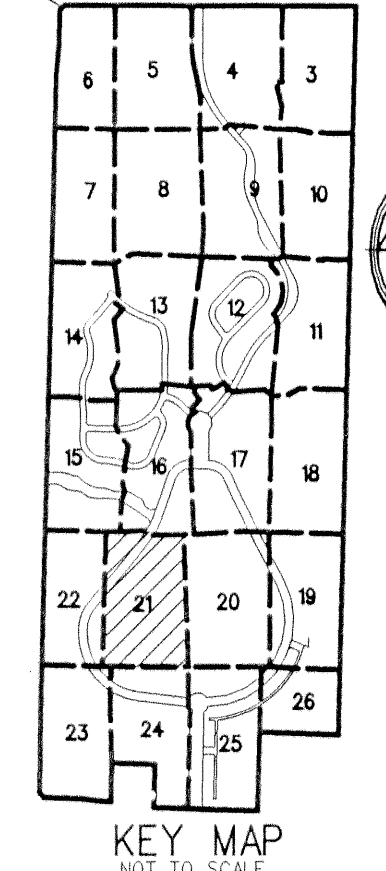
# EVERGRENE PLAT TWO

A REPLAT OF A PORTION OF TRACT "A", "EVERGRENE" (P.B. 93, PGS. 117-119, P.B.C.R.)  
CITY OF PALM BEACH GARDENS, PALM BEACH COUNTY, FLORIDA

49



SHEET 21 OF 26



- LEGEND:**
- SET PERMANENT REFERENCE MONUMENT (P.R.M.) •LB2936 UNLESS OTHERWISE NOTED
  - PERMANENT CONTROL POINT
  - ⊙ CENTERLINE
  - A ARC LENGTH
  - A.E. ANCHOR EASEMENT
  - CH CHORD
  - CHB CHORD BEARING
  - D DELTA (CENTRAL ANGLE)
  - D.B. DEED BOOK
  - D.E. DRAINAGE EASEMENT
  - FPL FLORIDA POWER & LIGHT COMPANY
  - IEE INGRESS EGRESS EASEMENT
  - LSE LIFT STATION EASEMENT
  - NPBCID NORTHERN PALM BEACH COUNTY IMPROVEMENT DISTRICT
  - N.R. NON-RADIAL
  - O.R.B. OFFICIAL RECORDS BOOK
  - P.C.D. PLANNED COMMUNITY DEVELOPMENT
  - PG. PAGE
  - P.B. PLAT BOOK
  - P.B.C.R. PALM BEACH COUNTY RECORDS
  - R RADIUS
  - R.P.B. ROAD PLAT BOOK
  - R/W RIGHT-OF-WAY
  - SF SQUARE FEET
  - SLE SEWER LINE EASEMENT
  - SUA SEACOAST UTILITY AUTHORITY
  - U.E. UTILITY EASEMENT
  - WMAE WATER MANAGEMENT ACCESS EASEMENT
  - WME WATER MANAGEMENT EASEMENT
  - WLE WATER LINE EASEMENT

MATCH LINE  
SEE SHEET 24 OF 26

MATCH LINE  
SEE SHEET 18 OF 26

MATCH LINE  
SEE SHEET 20 OF 26

WATER MANAGEMENT TRACT WM-1  
ALSO A WME IN FAVOR OF NPBCID